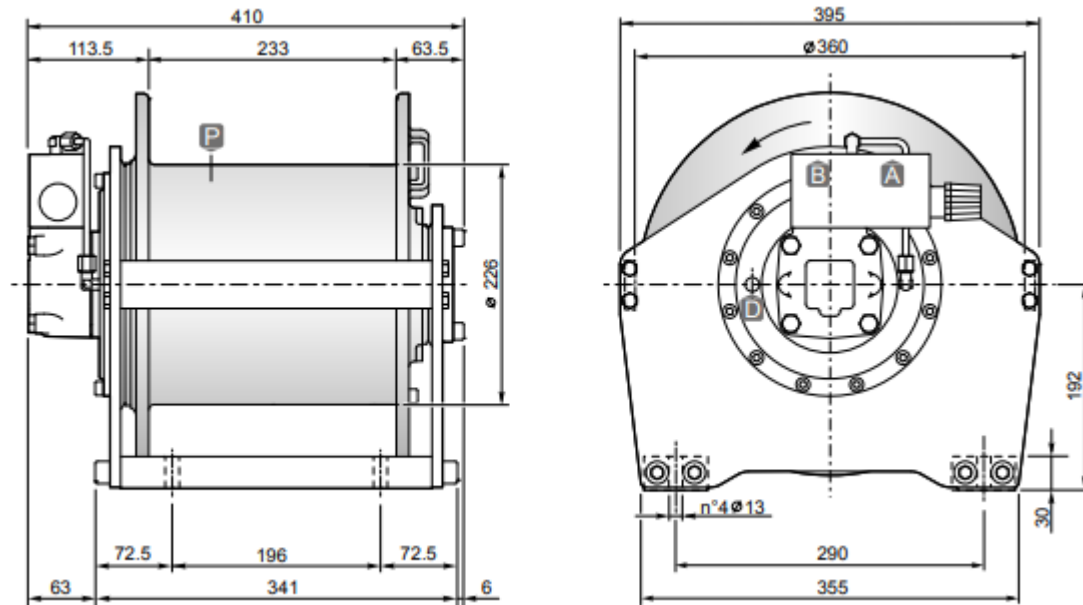


Hydraulic hoisting winches

Serie CW / Model CW13



DIMENSIONS (mm)



TECHNICAL DATA

Rope layer		1	2	3	4	5
Line pull	daN	1700	1560	1450	1350	1260
Rope speed with 40l/mn	m / mn	40	43	46	50	53
Rope capacity smooth drum	m	16	34	53	74	96

Hoisting pressure	max/min pump flow	Motor displacement	Gear ratio	Advised rope diameter	Weight	Connections A&B
bar	l/mn	cm ³	1 :	mm	kg	
175	75/15	80	12.28	10	93	3/4"

OPTIONS

- Cable tensioner
- Cable tensioner and lowering rope end micro switch
- Cable tensioner and hydraulic lowering end stroke
- Electronic load detection system
- Electric rotary limit switch
- CE standard kit