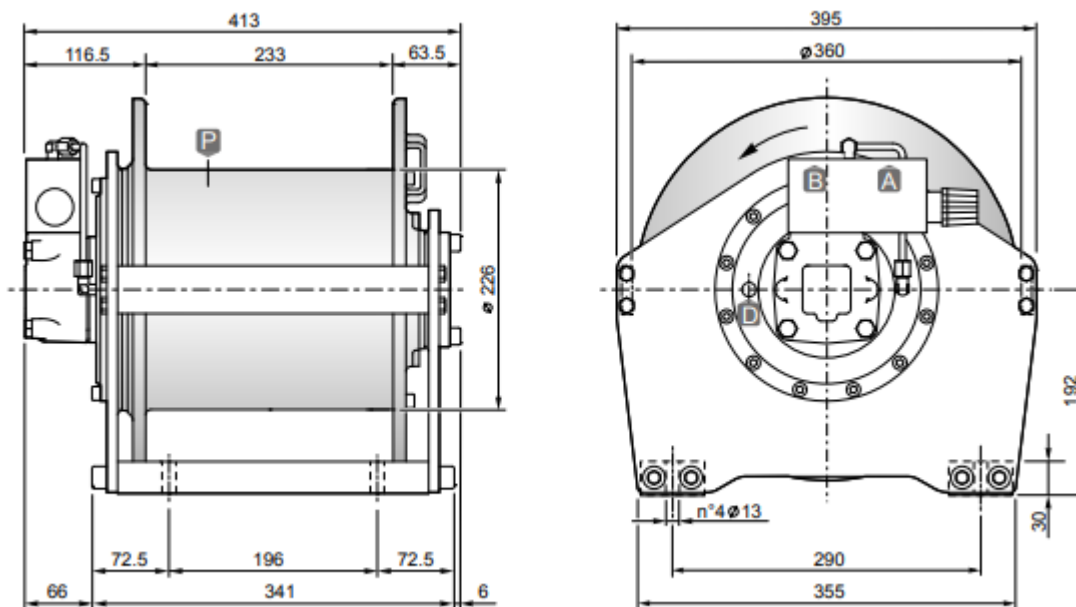


## Hydraulic hoisting winches

Serie CW / Model CW16



### DIMENSIONS (mm)



### TECHNICAL DATA

Rope layer		1	2	3	4	5
Line pull	daN	2070	1910	1770	1650	1550
Rope speed with 60l/mn	m / mn	31.5	34.5	37	40	42.5
Rope capacity smooth drum	m	16	34	53	74	96

Hoisting pressure	max/min pump flow	Motor displacement	Gear ratio	Advised rope diameter	Weight	Connections A&B
bar	l/mn	cm3	1 :	mm	kg	
170	75/15	100	12.28	10	94	3/4"

### OPTIONS

- Cable tensioner
- Cable tensioner and lowering rope end micro switch
- Cable tensioner and hydraulic lowering end stroke
- Electronic load detection system
- Electric rotary limit switch
- CE standard kit