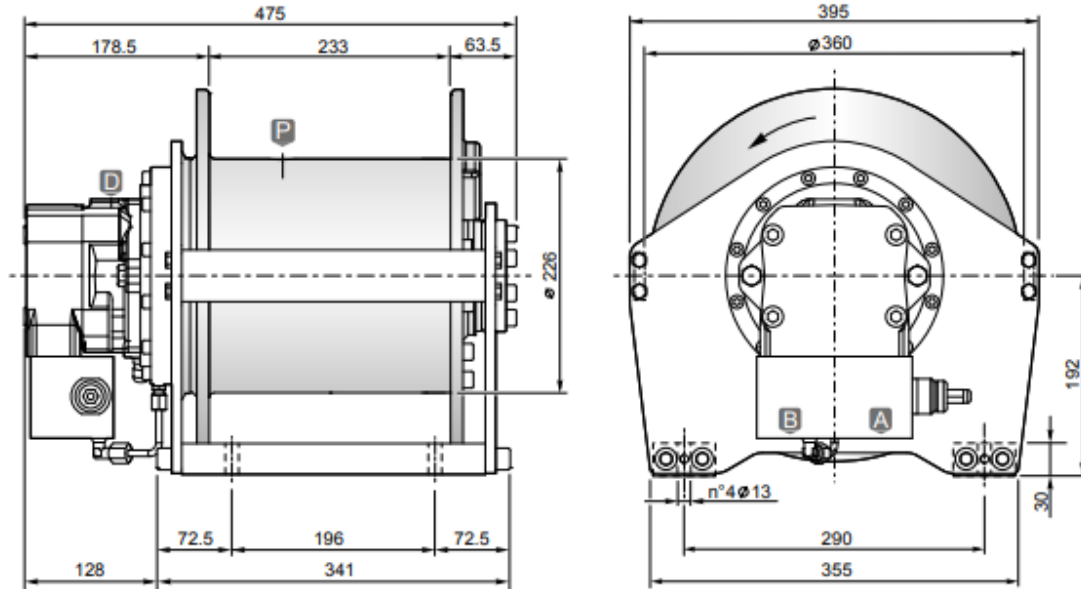


## Hydraulic hoisting winches

Serie CW / Model CW16R



### DIMENSIONS (mm)



### TECHNICAL DATA

Rope layer		1	2	3	4	5
Line pull	daN	2070	1910	1770	1650	1550
Rope speed with 60l/mn	m / mn	43	47	51	55	58
Rope capacity smooth drum	m	16	34	53	74	96

Hoisting pressure	max/min pump flow	Motor displacement	Gear ratio	Advised rope diameter	Weight	Connections A&B
bar	l/mn	cm <sup>3</sup>	1 :	mm	kg	
210	100/15	45	21.03	10	120	3/4"

### OPTIONS

- Cable tensioner
- Cable tensioner and lowering rope end micro switch
- Cable tensioner and hydraulic lowering end stroke
- Electronic load detection system
- Electric rotary limit switch
- CE standard kit