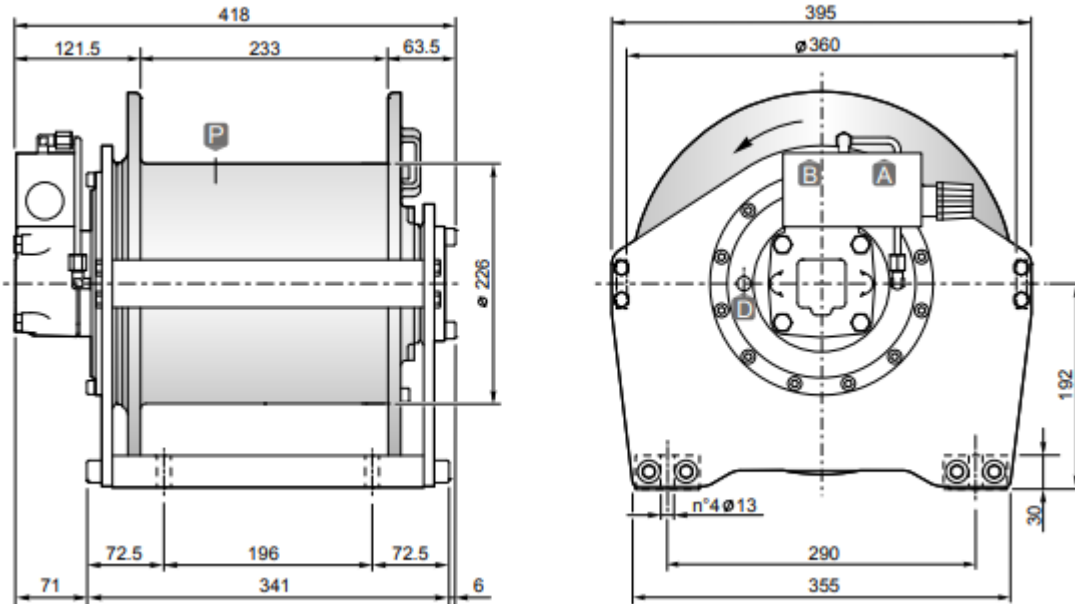


Hydraulic hoisting winches

Serie CW / Model CW20



DIMENSIONS (mm)



TECHNICAL DATA

Rope layer		1	2	3	4
Line pull	daN	2600	2360	2160	2000
Rope speed with 60l/mn	m / mn	25	28	31	33
Rope capacity smooth drum	m	13	29	45	63

Hoisting pressure	max/min pump flow	Motor displacement	Gear ratio	Advised rope diameter	Weight	Connections A&B
bar	l/mn	cm ³	1 :	mm	kg	
175	75/15	125	12.28	12	95	3/4"

OPTIONS

- Cable tensioner
- Cable tensioner and lowering rope end micro switch
- Cable tensioner and hydraulic lowering end stroke
- Electronic load detection system
- Electric rotary limit switch
- CE standard kit