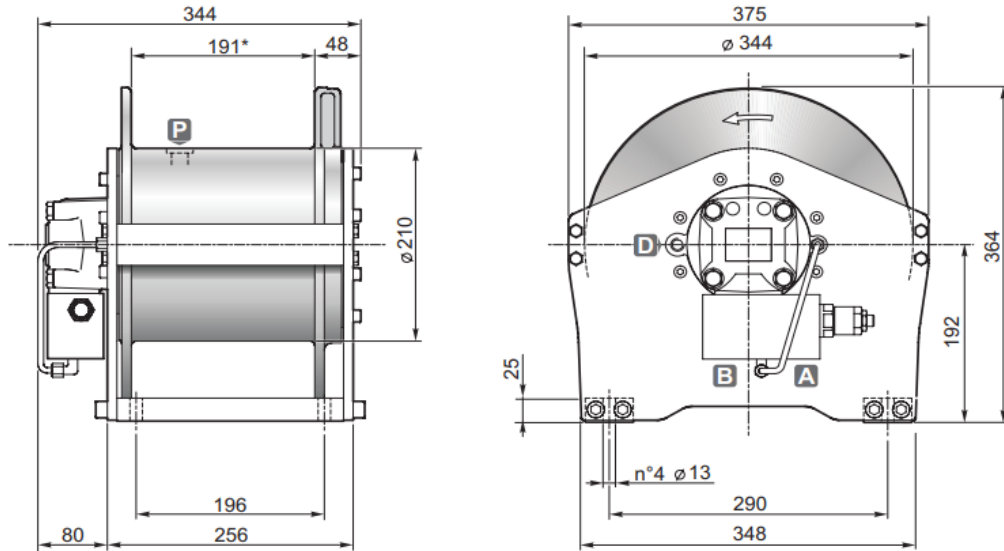


# Hydraulic hoisting winches

Serie S / Model S 19



## DIMENSIONS (mm)



## TECHNICAL DATA

Hoisting pressure	max/min pump flow	Motor displacement	Gear ratio	Advised rope diameter	Weight	Connections A&B
<i>bar</i>	<i>l/mn</i>	<i>cm3</i>	<i>1 :</i>	<i>mm</i>	<i>kg</i>	
205	75/20	200	5.77	12	78	3/4"

Rope layer		1	2	3	4
Line pull	<i>daN</i>	2500	2250	2050	1900
Rope speed with 60l/mn	<i>m / mn</i>	34	37	41	45
Rope capacity smooth drum	<i>m</i>	10	22	35	48
Rope capacity grooved drum	<i>m</i>	9	20	32	45

## OPTIONS

- Cable tensioner
- Cable tensioner and lowering rope end micro switch
- Cable tensioner and hydraulic lowering end stroke
- Electric rotary limit switch
- CE standard kit