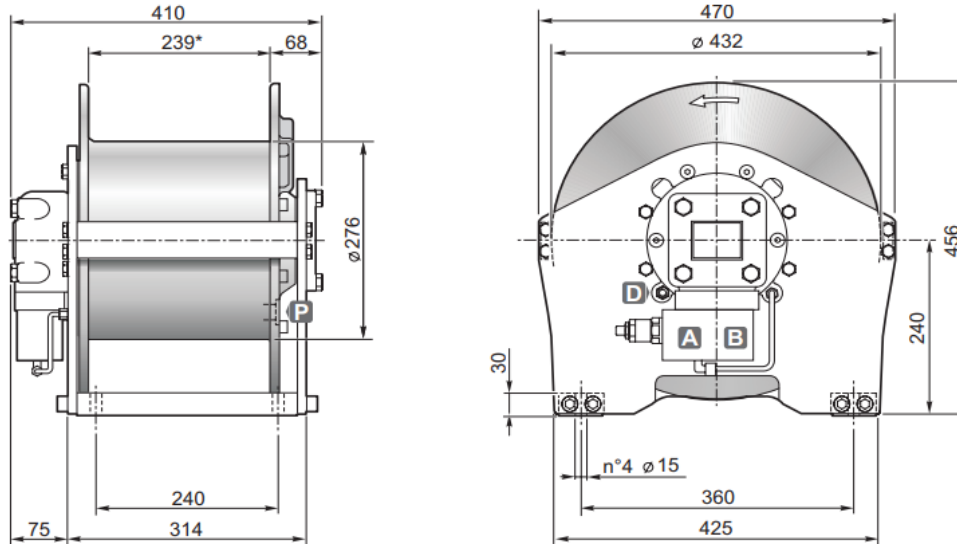


Hydraulic hoisting winches

Serie S / Model S 20



DIMENSIONS (mm)



TECHNICAL DATA

| Hoisting pressure | max/min pump flow | Motor displacement | Gear ratio | Advised rope diameter | Weight | Connections A&B |
|-------------------|-------------------|-----------------------|------------|-----------------------|-----------|-----------------|
| <i>bar</i> | <i>l/mn</i> | <i>cm³</i> | 1 : | <i>mm</i> | <i>kg</i> | |
| 225 | 100/15 | 200 | 6.5 | 12 | 154 | 3/4" |

| Rope layer | | 1 | 2 | 3 | 4 |
|----------------------------|---------------|------|------|------|------|
| Line pull | <i>daN</i> | 2500 | 2300 | 2150 | 2000 |
| Rope speed with 60l/mn | <i>m / mn</i> | 38.5 | 42 | 45 | 48.5 |
| Rope capacity smooth drum | <i>m</i> | 17 | 35 | 55 | 76 |
| Rope capacity grooved drum | <i>m</i> | 16 | 33 | 51 | 71 |

OPTIONS

- Cable tensioner
- Cable tensioner and lowering rope end micro switch
- Cable tensioner and hydraulic lowering end stroke
- Electric rotary limit switch
- CE standard kit