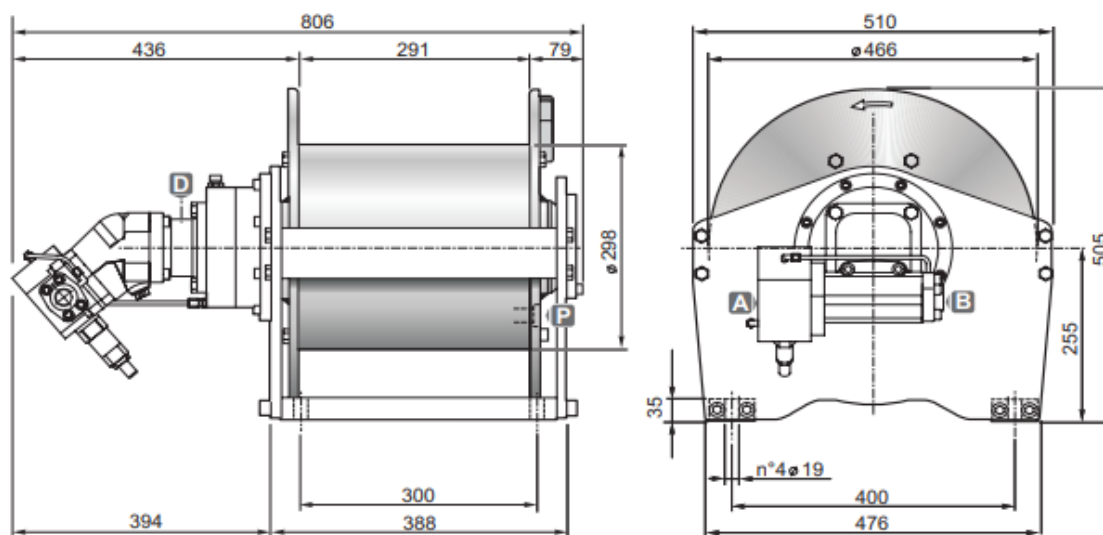


## Hydraulic hoisting winches

Serie SE / Model SE 30 V



### DIMENSIONS (mm)



### TECHNICAL DATA

Hoisting pressure	max/min pump flow	Motor displacement	Gear ratio	Advised rope diameter	Weight	Connections A&B
<i>bar</i>	<i>l/mn</i>	<i>cm<sup>3</sup></i>	<i>1 :</i>	<i>mm</i>	<i>kg</i>	
235	190/25	47	50.5	14	236	3/4" B ; 1" A

Rope layer		1	2	3	4
Line pull	<i>daN</i>	3800	3500	3200	3000
Rope speed with 180l/mn	<i>m / mn</i>	32	34.5	37.5	40.5
Rope capacity smooth drum	<i>m</i>	19	40	63	88
Rope capacity grooved drum	<i>m</i>	17	36	57	80

### OPTIONS

- Cable tensioner
- Cable tensioner and lowering rope end micro switch
- Cable tensioner and hydraulic lowering end stroke
- Electric rotary limit switch
- CE standard kit