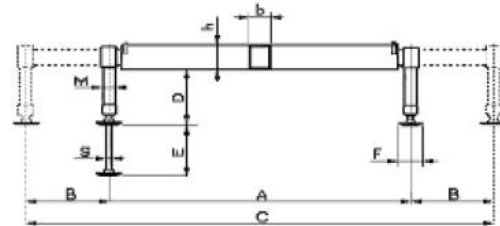


Hydraulic extension stabilisers

References	Crane T/m	R*Max (daN)	Weight in Kg	A	C	h*b	D		E	M	S	Overall length of folded cylinder	Options	
							Min	Maxi					Swivel foot	Pilot valve
C263300	14>26	6500	200	2100	3300	204X102	195	500	450	85	45	700	Optional	Optional
C263320	14>26	6500	200	2100	3300	204X102	195	360	450	85	45	560		
C264400	14>26	6600	330	2100	4400	200X200	195	500	450	85	45	700		
C264420	14>26	6600	330	2100	4400	200X200	195	360	450	85	45	560		
C403300	19>40	9100	255	2100	3300	202X120	265	665	550	95	55	785		
C403320	19>40	9100	255	2100	3300	202X120	265	525	550	95	55	635		
C404700	19>40	9100	380	2100	4700	206X234	275	665		95	55	870	Standard	
C404720	19>40	9100	380	2100	4700	206X234	275	515	550	95	55	720		
C545000	25>54	10500	430	2200	5000	250X232	240	630	550	95	55	870		
C545020	25>54	10500	430	2200	5000	250X232	240	480	550	95	55	720		
C675000	31>67	14000	530	2200	5000	301X232	245	720	650	105	65	950		
C675020	31>67	14000	530	2200	5000	301X232	245	500	650	105	65	820		
C805900	46>80	17800	820	2435	5900	320X325	234	643	590	141	90	910		
C805920	46>80	17800	820	2435	5900	320X325	234	493	590	141	90	760		



Hydraulic extension stabilisers and offset supports

References	Crane T/m	R*Max (daN)	Weight in Kg	A	C	h*b	D		E	M	S	Overall length of folded cylinder	Options	
							Min	Maxi					Swivel foot	Pilot valve
C806000	46>80	17800	820	2345	6045	325x320	30	550	590	141	90	910	Standard	
C806020	46>80	17800	820	2345	6045	325x320	30	400	590	141	90	760		
C1067000	42>106	17800	850	2400	7000	322x357	104	500	590	141	90	910		
C1067020	42>106	17800	850	2400	7000	322x357	104	340	590	141	90	760		
C1068000	42>106	15200	990	2400	8000	322x357	93	500	590	141	90	910		
C1068020	42>106	15200	990	2400	8000	322x357	93	340	590	141	90	760		
C1508020	106>150	19000	1200	2400	8000	355x378	93	500	590	141	90	910		
C1508020	106>150	19000	1200	2400	8000	355x378	93	340	590	141	90	760		
C2008400	130>200	25000	1550	2300	8400	330x500	93	640	590	141	90	910		
C2008420	130>200	25000	1550	2300	8400	330x500	93	340	590	141	90	760		

