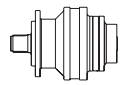
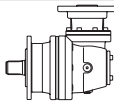


RE 1520

	i_e	$T_{cont.} \text{ (Nm)}$							$n_1 \text{ max}$ RPM
		$n_2 \times h$	$n_2 \times h$	$n_2 \times h$	$n_2 \times h$	$n_2 \times h$	$n_2 \times h$	$n_2 \times h$	
		10.000	25.000	50.000	100.000	500.000	1.000.000	2.000.000	
RE 1521	4,09	23544	20496	18456	16787	11868	9640	7830	2400
	5,25	17535	15265	13746	12883	11541	9374	7614	2400
	6,23	13517	11767	10596	10127	9237	8879	7520	2400
RE 1522	14,73	23544	20496	18456	16787	11329	9202	7475	3100
	17,39	23003	20367	18456	16787	11153	9059	7358	3100
	21,82	18039	16411	15773	15161	10860	8821	7165	3100
	25,36	14865	13757	13223	12709	10763	8742	7101	3100
	28,00	17535	15265	13746	12883	11541	9374	7614	3100
	32,55	17535	15265	13746	12883	11541	9374	7614	3100
	33,23	13517	11767	10596	10127	9237	8879	7520	3100
	39,38	14217	13492	12968	12464	11369	9374	7614	3100
RE 1523	46,73	13517	11767	10596	10127	9237	8879	7520	3100
	51,25	22618	20496	18456	15319	9452	7678	6236	5200
	60,50	23003	20367	18456	16787	10617	8624	7005	5200
	62,78	21981	20496	18456	15102	9319	7569	6148	5200
	74,12	23003	20367	18456	16787	10467	8502	6905	5200
	80,57	17535	15265	13746	12883	11096	9013	7321	5200
	93,01	18039	16411	15773	15161	10860	8821	7165	5200
	100,31	18783	17825	17133	16422	10133	8231	6685	5200
	109,04	17535	15265	13746	12883	10743	8726	7088	5200
	125,87	18039	16411	15773	15161	10860	8821	7165	5200
	146,33	14865	13757	13223	12709	10763	8742	7101	5200
	157,09	16543	15699	15089	14503	10860	8821	7165	5200
	182,62	14865	13757	13223	12709	10763	8742	7101	5200
	201,60	17535	15265	13746	12883	11541	9374	7614	5200
RE 1524	234,36	17535	15265	13746	12883	11541	9374	7614	5200
	239,26	13517	11767	10596	10127	9237	8879	7520	5200
	278,14	13517	11767	10596	10127	9237	8879	7520	5200
	210,56	23003	20367	18456	16787	10617	8624	7005	5200
	218,49	22618	20496	18456	15319	9452	7678	6236	5200
	257,94	23003	20367	18456	16787	10617	8624	7005	5200
	280,40	17535	15265	13746	12883	11256	9143	7426	5200
	315,99	23003	20367	18456	16787	10467	8502	6905	5200
	349,06	23003	20367	18456	16787	10617	8624	7005	5200
	396,53	18039	16411	15773	15161	10860	8821	7165	5200
	452,05	21981	20496	18456	15102	9319	7569	6148	5200
	508,89	17535	15265	13746	12883	11541	9374	7614	5200
	578,69	18783	17825	17133	16422	10133	8231	6685	5200
	629,07	17535	15265	13746	12883	10743	8726	7088	5200
	722,20	18783	17825	17133	16422	10133	8231	6685	5200
	800,57	17535	15265	13746	12883	11541	9374	7614	5200
	906,29	18039	16411	15773	15161	10860	8821	7165	5200
	999,11	17535	15265	13746	12883	11541	9374	7614	5200
	1156,68	16896	15265	13746	12883	11541	9374	7614	5200
	1285,79	13517	11767	10596	10127	9237	8879	7520	5200
1451,52	17535	15265	13746	12883	11541	9374	7614	5200	
1635,58	14217	13492	12968	12464	11369	9374	7614	5200	
1722,68	13517	11767	10596	10127	9237	8879	7520	5200	
2041,20	14217	13492	12968	12464	11369	9374	7614	5200	

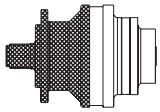
RA 1520

	i_e	$T_{cont.} (Nm)$							$n_1 \text{ max}$ RPM
		$n_2 \times h$ 10.000	$n_2 \times h$ 25.000	$n_2 \times h$ 50.000	$n_2 \times h$ 100.000	$n_2 \times h$ 500.000	$n_2 \times h$ 1.000.000	$n_2 \times h$ 2.000.000	
RA 1522	12,57	23544	20496	18456	16787	11868	9640	7830	3500
	16,13	17535	15265	13746	12883	11541	9374	7614	3500
	19,09	17127	14910	13599	13071	11868	9640	7830	3500
	24,50	17535	15265	13746	12883	11541	9374	7614	3500
	29,08	13517	11767	10596	10127	9237	8879	7520	3500
RA 1523	58,91	18625	17107	15129	12288	7582	6159	5002	3500
	69,55	21442	20005	16993	13802	8517	6918	5619	3500
	75,60	17535	15265	13746	12883	9029	7334	5957	3500
	87,27	18039	16411	15773	15161	9984	8109	6587	3500
	101,45	14865	13757	13223	12709	10763	8742	7101	3500
	112,00	17535	15265	13746	12883	11541	9374	7614	3500
	130,20	17535	15265	13746	12883	11541	9374	7614	3500
	157,50	14217	13492	12968	12464	11369	9374	7614	3500
RA 1524	186,92	13517	11767	10596	10127	9237	8879	7520	3500
	164,00	14792	14037	12108	9835	6069	4929	4004	3500
	193,61	17298	16415	13600	11047	6816	5537	4497	3500
	200,91	17912	16998	13957	11337	6995	5682	4615	3500
	237,19	20946	19300	15677	12733	7857	6382	5184	3500
	248,47	17535	15265	13746	12883	8117	6593	5355	3500
	271,89	16062	15243	14651	14011	8645	7022	5704	3500
	297,65	18039	16411	15773	14927	9210	7481	6077	3500
	320,98	18783	17825	17133	15737	9710	7887	6406	3500
	348,92	17535	15265	13746	12883	10294	8362	6792	3500
	402,80	18039	16411	15773	15161	10860	8821	7165	3500
	444,05	17535	15265	13746	12883	11541	9374	7614	3500
	516,92	17535	15265	13746	12883	11541	9374	7614	3500
	600,92	17535	15265	13746	12883	11541	9374	7614	3500
	645,12	17535	15265	13746	12883	11541	9374	7614	3500
	749,95	17535	15265	13746	12883	11541	9374	7614	3500
907,20	14217	13492	12968	12464	11369	9374	7614	3500	
1076,68	13517	11767	10596	10127	9237	8879	7520	3500	

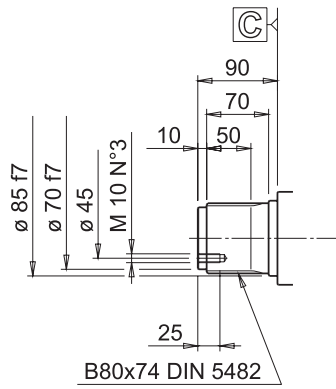
	$P_t (kW)$				$P_t (kW)$		
	H	T	F		H	T	F
RE 1521	38,5	38	26,6	RA 1522	23	22,9	19
RE 1522	22,9	22,7	16,9	RA 1523	13,4	13,3	10,3
RE 1523	16,2	16,1	12,1	RA 1524	12,6	12,5	9,5
RE 1524	12,8	12,7	9,7				

$T_{imp.} = 31200 \text{ Nm}$

RE 1520

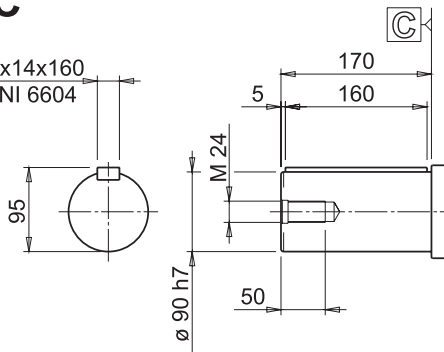


S

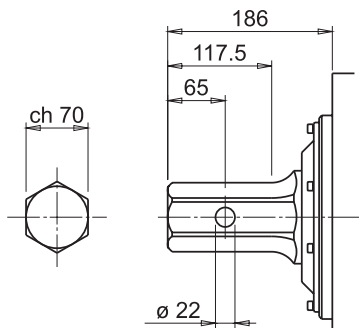


C

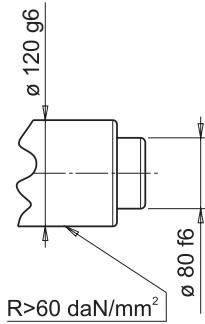
25x14x160
UNI 6604



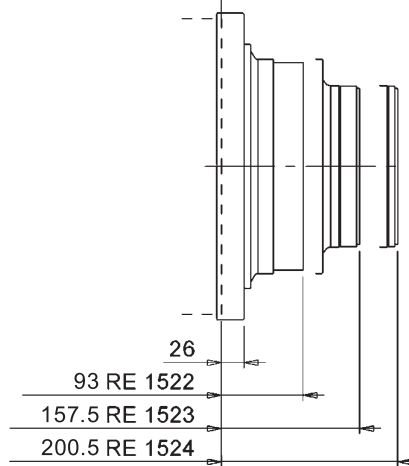
E



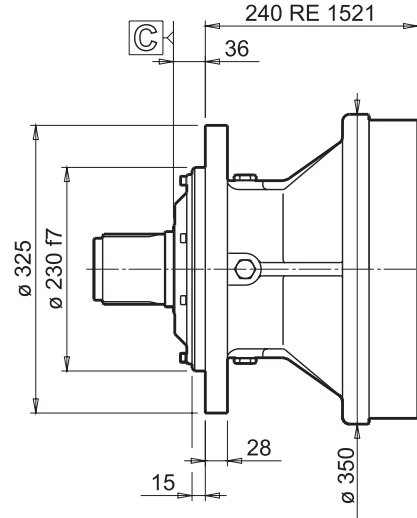
Q



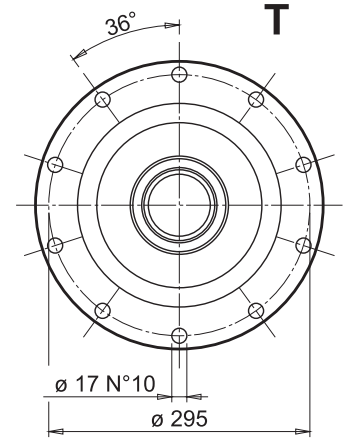
A



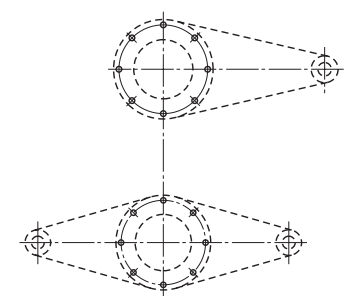
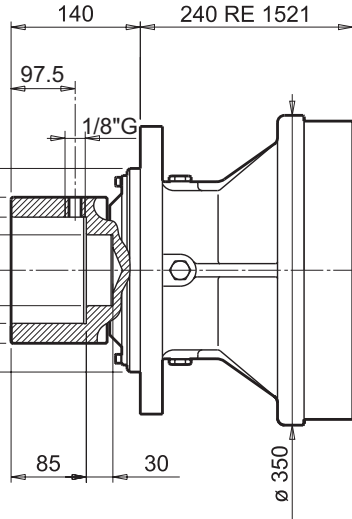
240 RE 1521



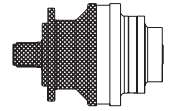
T



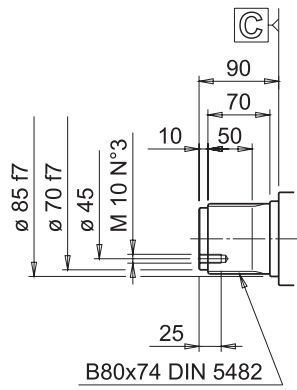
T



RE 1520

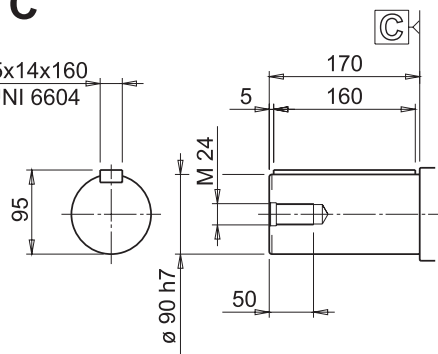


S

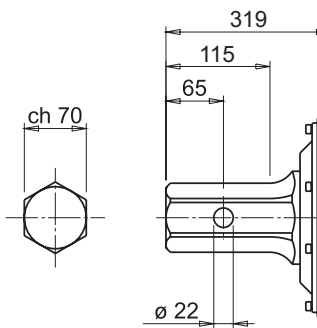


C

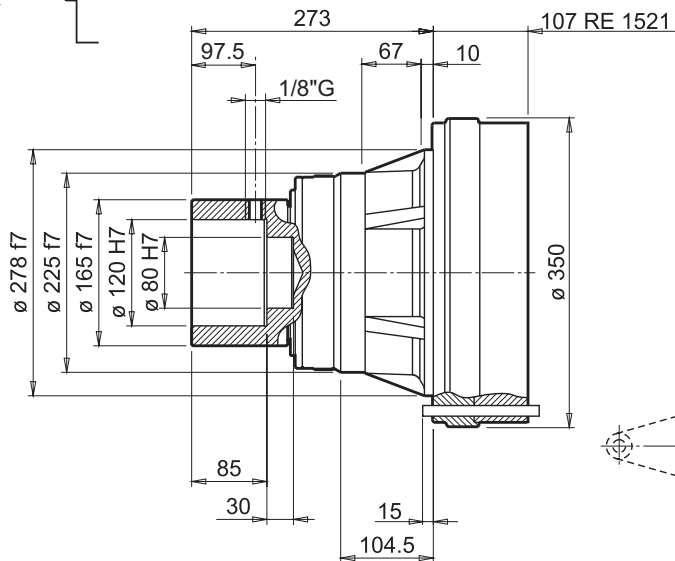
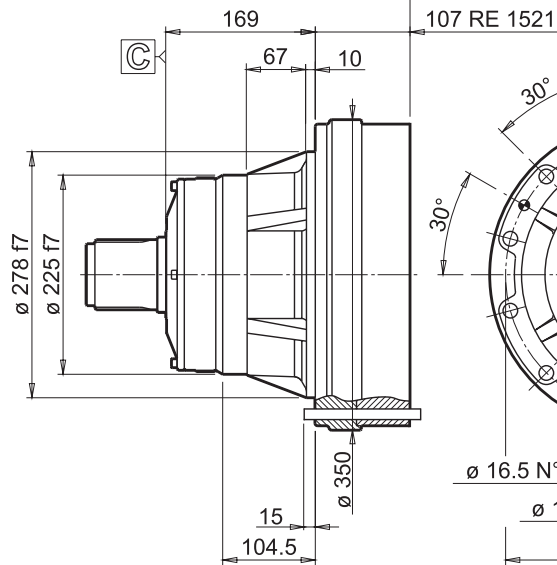
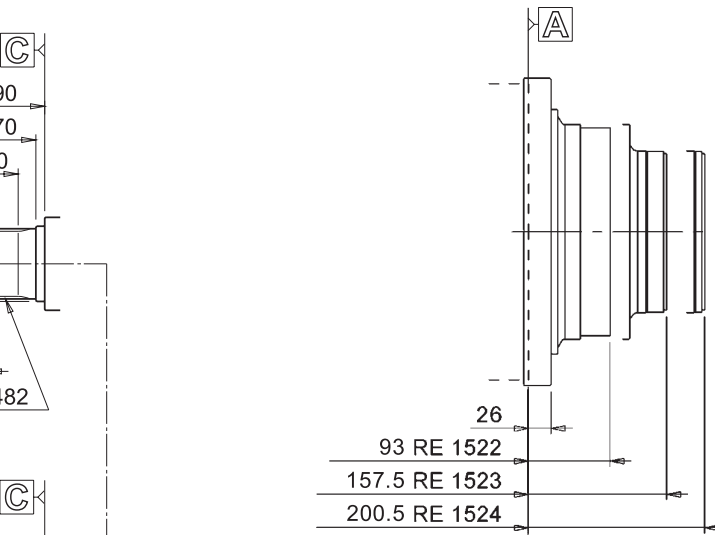
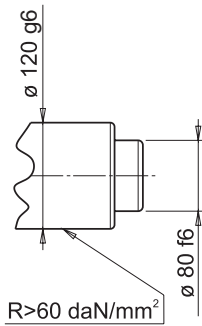
25x14x160
UNI 6604



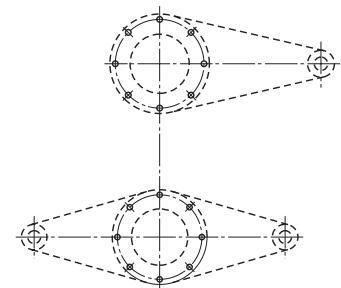
F



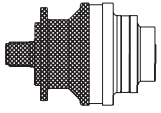
Q



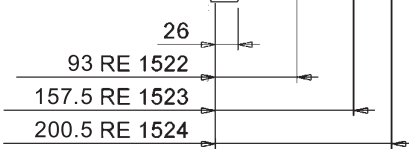
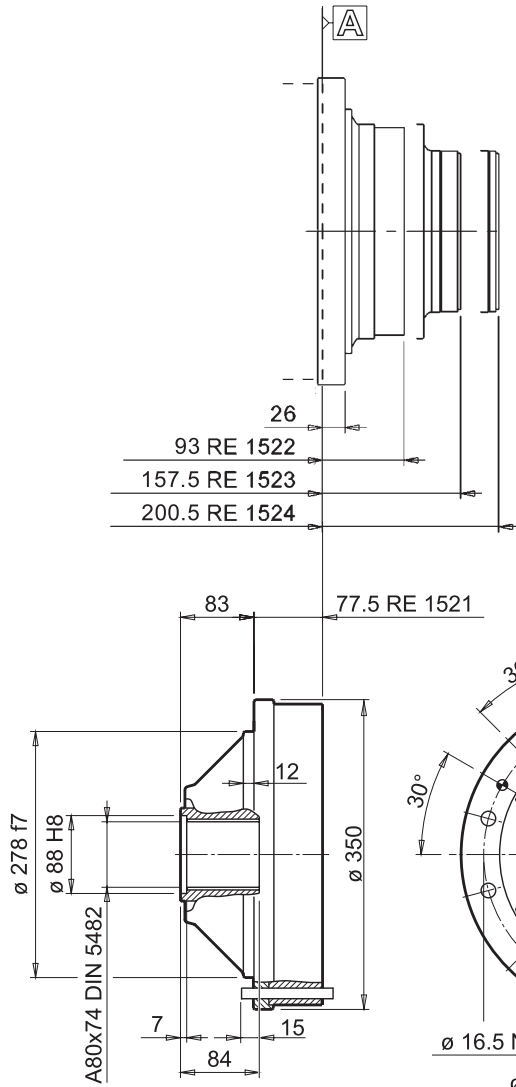
H



RE 1520

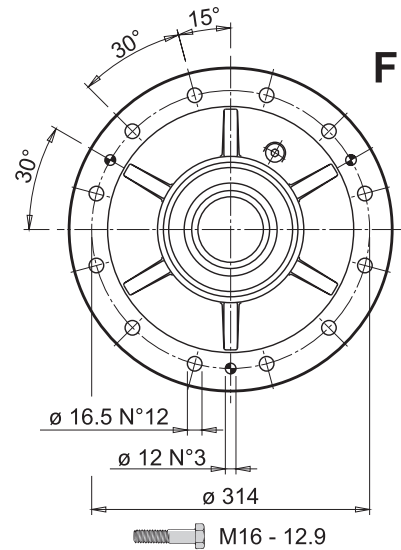


S

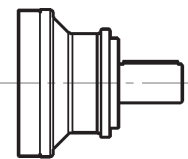
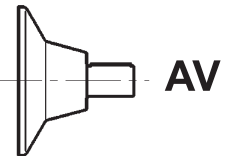
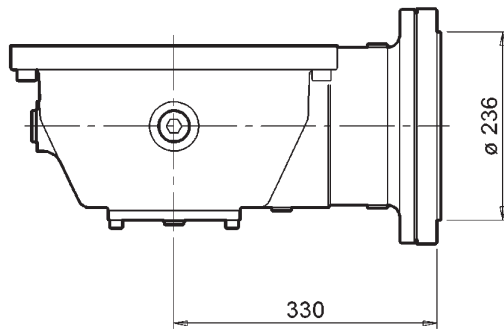
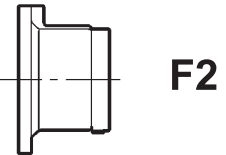
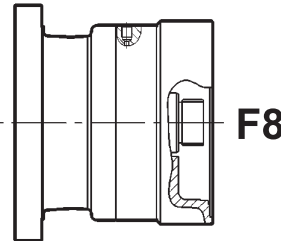
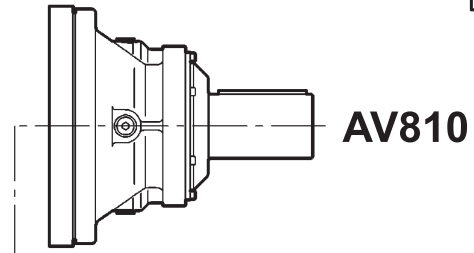
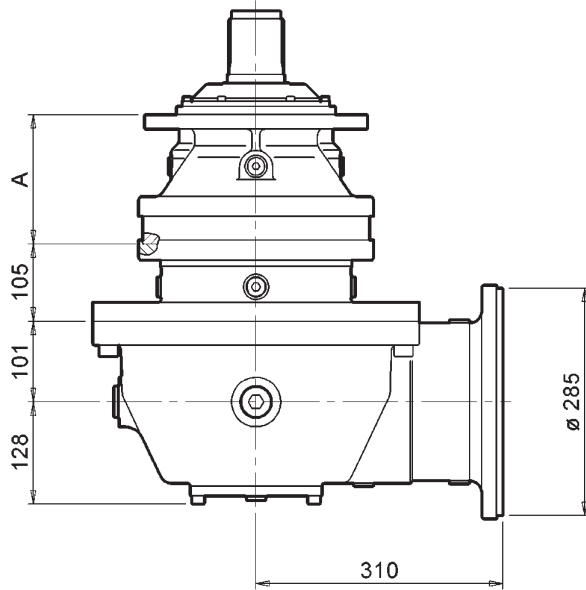
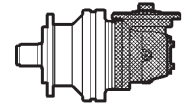


77.5 RE 1521

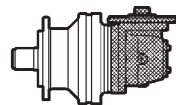
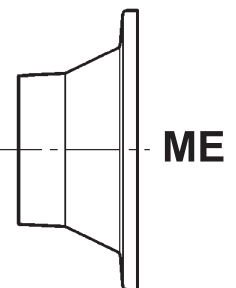
F



RA 1522



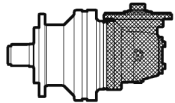
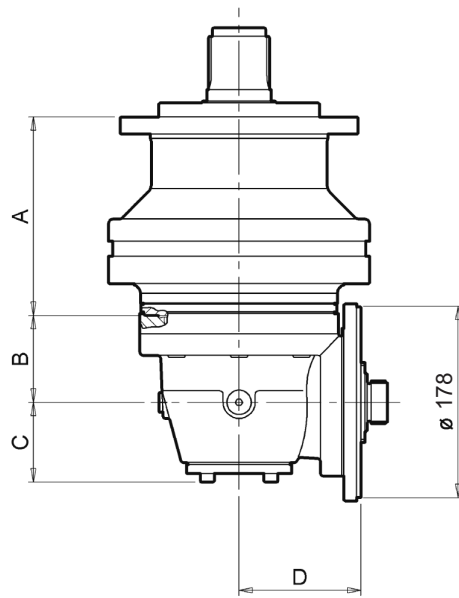
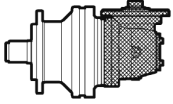
AV510



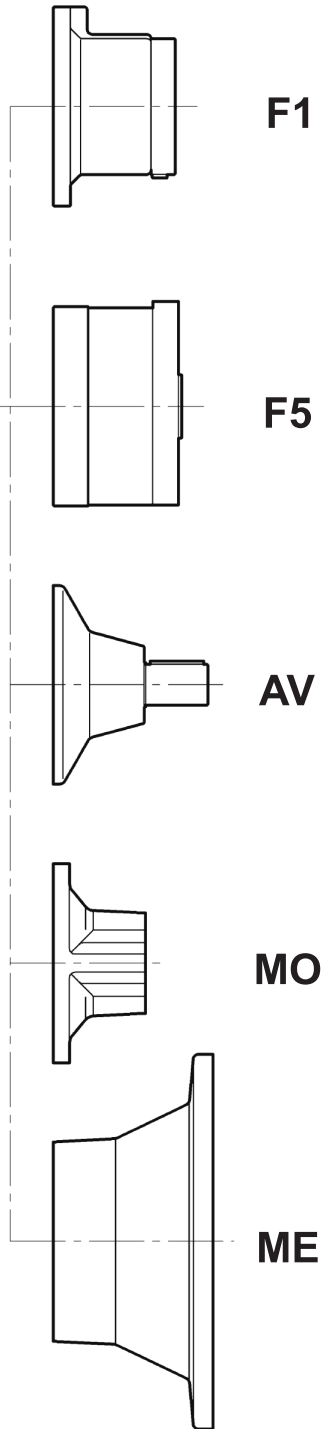
RA 1522	A		
	T-TQ	H-HQ	F
	240	107	77.5

		ST 210	MO-MR 214	ME 215	AV 216	225	231	238	242	247	249

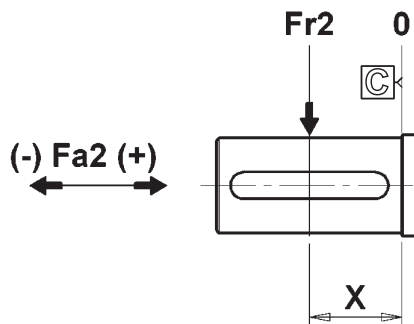
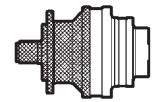
RA 1523 / 1524



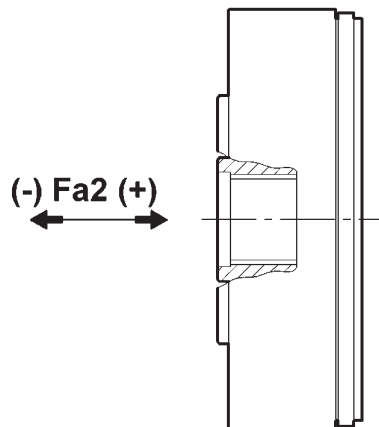
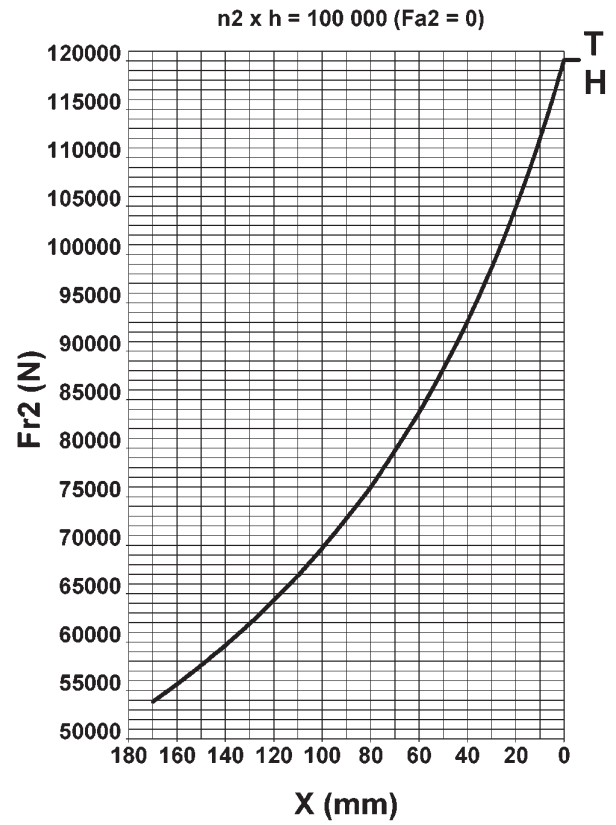
	A			B	C	D
	T-TQ	H-HQ	F			
RA 1523	333	200	170.5	122	91	171.3
RA 1524	397.5	264.5	235	81	74.5	113.8



RE 1520



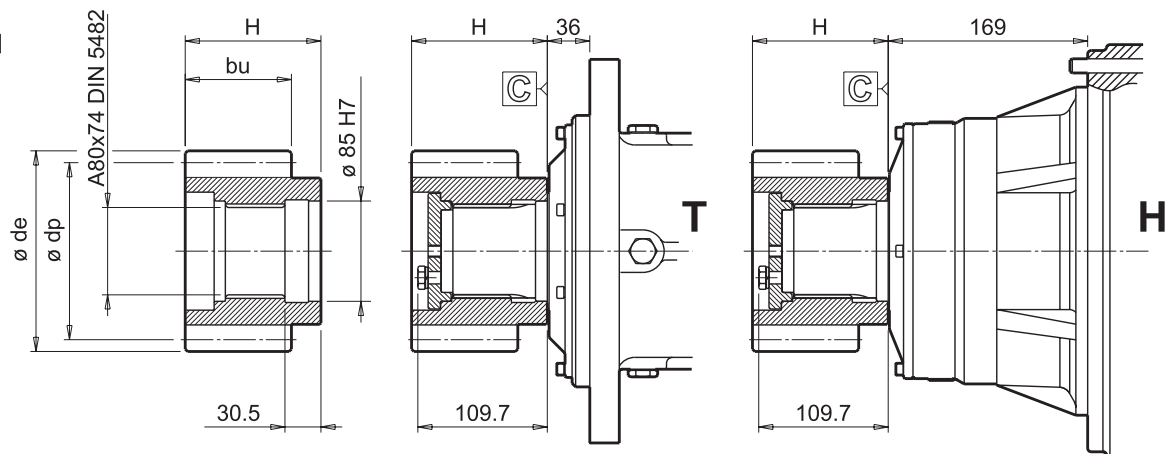
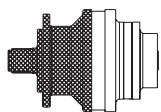
n2 x h = 100 000 Fa2 max (Fr2 = 0)		
	Fa2 (+)	Fa2 (-)
T - H	104 700	73 400



n2 x h = 100 000 Fa2 max (Fr2 = 0)		
	Fa2 (+)	Fa2 (-)
FS	32 750	32 750

	n2 x h						
	20 000	40 000	60 000	80 000	100 000	200 000	400 000
Kf	1.7	1.3	1.15	1.06	1	0.8	0.63

RE 1520



m	z	x	de	dp	bu	H	
10	14	0.32	162.4	140	103	116	02571001
10	15	0	170	150	90	115	40100940
10	18	0	198	180	87	116	40100822
12	14	0.5	199	168	90.5	90.5	40100856
12	16	0	214	192	90	95	40100855
16	19	0	336	304	120	120	02571006