

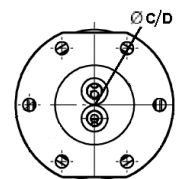
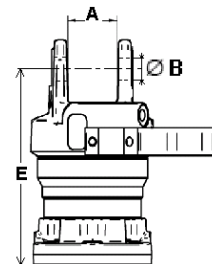
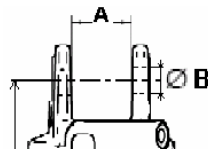
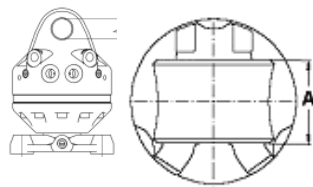
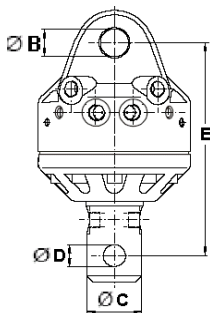
# Rotators

## ( Technologie Orbital )

Rotators à Tenon											
Type	A	B	C	D	E	Ports	Charge max (Kg)	Couple (Nm)	Flexion (N/m)	Pression max (bar)	Poids (Kg)
<i>SR 25</i>	60	25	49,5	25	212	3/8 Gas	2 500	300	1 050	260	12
<i>SR 459-30</i>	84	30	59	30	259	3/8 Gas	4 500	850	3 000	320	25
<i>SR 459-26</i>	84	30	59	26	259	3/8 Gas	4 500	850	3 000	320	25
<i>SR 462-25</i>	84	30	62	25	242	3/8 Gas	4 500	850	3 000	320	25
<i>SR 468-30</i>	84	30	68	30	242	3/8 Gas	4 500	850	3 000	320	25
<i>SR 469-30</i>	84	30	69	30	252	3/8 Gas	4 500	850	3 000	320	25
<i>SR 6.68 L</i>	80,5	35	68	30	282	1/2 Gas	6000	1000	4500	320	32
<i>SR 6.69 //</i>	80,5	35	69	30	282	1/2 Gas	6000	1000	4500	320	32

Rotators Flasqués											
Type	A	B	C	D	E	Ports	Charge max (Kg)	Couple (Nm)	Flexion (N/m)	Pression max (bar)	Poids (Kg)
<i>SR 4F</i>	84	30	140/4		220	3/8 Gas	4 500	850	3 000	320	27
<i>SR 6F 173/6</i>	81	35	173/6		275	1/2 Gas	6 000	1 000	8 500	320	34
<i>SR 10F 173/6-35</i>	81	35	173/6		313	3/4 Gas	10 000	1 800	12 000	320	66
<i>SR 10F 173/6-352</i>	81	35	173/6		313	3/4 Gas	10 000	1 800	12 000	320	66
<i>SR 10F 173/6-45</i>	101	45	173/6		329	3/4 Gas	10 000	1 800	12 000	320	68



Rotators à Tenon SR 25, SR 4 & Flasqué SR4F

SR 6

Rotators Flasqués sauf SR4F